



Consortium

CGIAR is a global research partnership for a food secure future

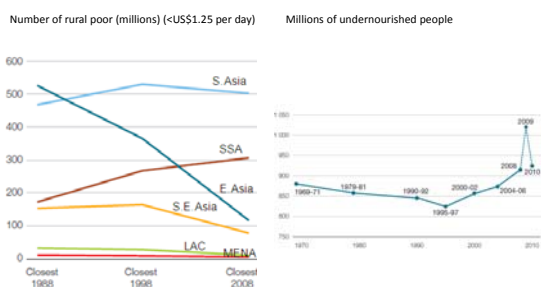
**Systems research & development outcomes:
seeking synergies between IFSA & CGIAR**

IFSA, Berlin, 2 April 2014

Today

- CGIAR reform
- Systems research in the CRPs
- Systems CRPs and development outcomes
- Scale and partnerships

CGIAR Reform: Rural poverty + food security

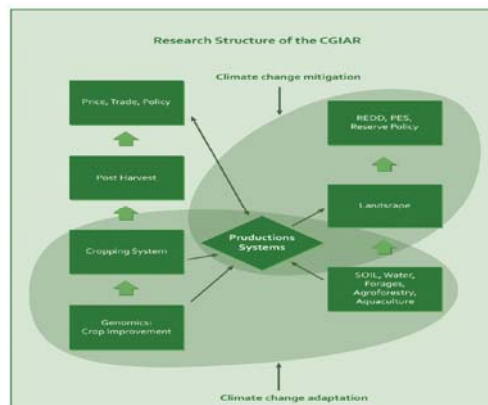
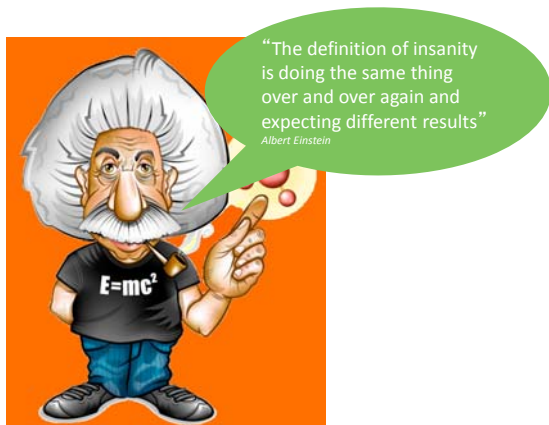



CGIAR 40 1983 2014

A STRATEGY AND RESULTS FRAMEWORK FOR THE CGIAR

System level Outcomes

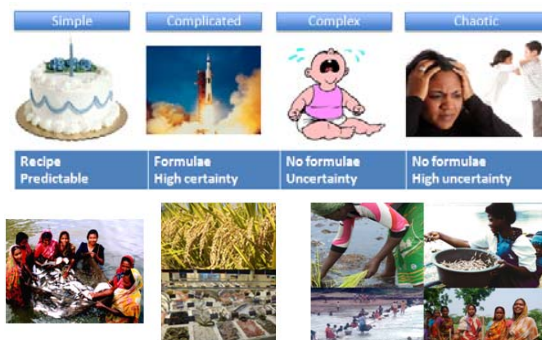
1. Reduced rural poverty
2. Improved food security
3. Improved nutrition and health
4. Sustainably managed natural resources



SRF and systems research

- “Agricultural production system research should increase and progressively become the focal point for the integration of commodity and natural resources research.” (CGIAR SRF 2011)

Systems CRPs – shifting focus



Systems CRPs – shifting focus



Systems CRPs and change

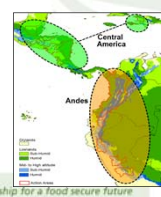
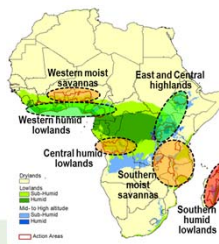
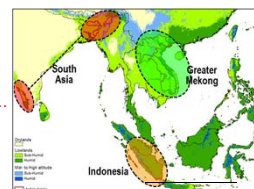


Change the way we work in complex farming systems and foster impact at scale on rural poverty

Humidtropics Action Areas

Key Criteria:

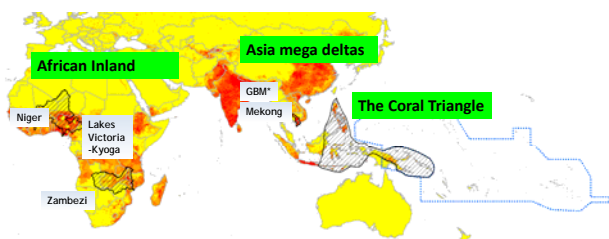
- Representative and capture diversity
- Urgent need for large-scale impacts
- Advance earlier investments/projects
 - CIALCA, SSA-CP, Africa Rising, STCP...
- Build on existing and potential partnerships



3-Tier Approach
1: 2012
2: 2017
3: 2020



AAS – 3 focal systems



- High numbers of poor and/or High % of total population dependent on AAS
- High vulnerability to change (climate/sea level/water)
- Potential to scale out



Intermediate Development Outcomes

Common IDO	SLO 1 Reducing Rural Poverty	SLO 2 Improving Food Security	SLO 3 Improving Nutrition and Health	SLO 4 Sustainably Managing Natural Resources
1. Productivity				
2. Food security				
3. Nutrition				
4. Income				
5. Gender & Empowerment				
6. Capacity to Innovate				
7. Adaptive capacity				
8. Policies				
9. Environment				
10. Future Options				
11. Climate				

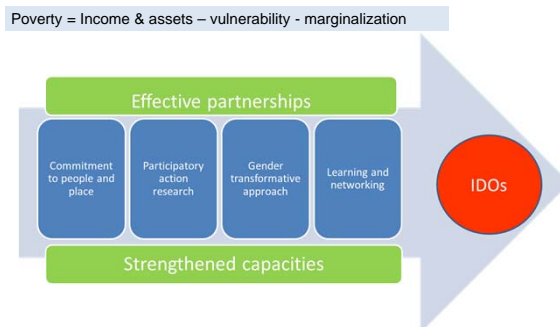
Example targets for AAS IDOs

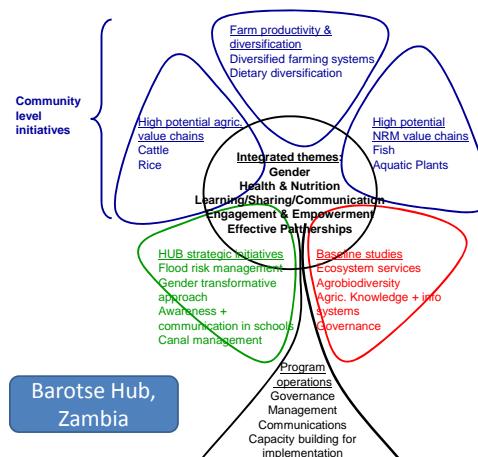
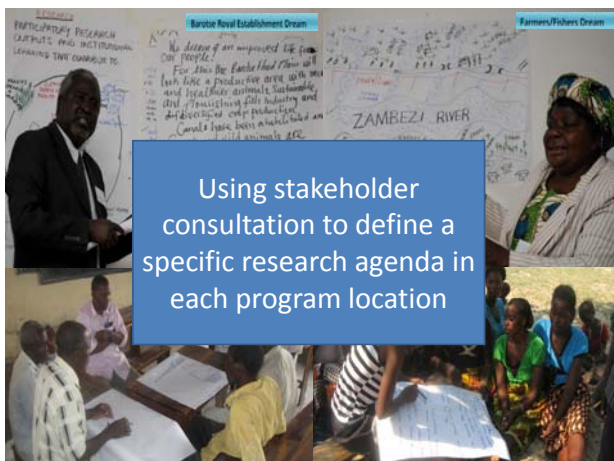
AAS IDO	Indicator	Targets		
		2017	2020	2023
Income	Income in # poor households increased by at least 30% and with 40% of that income earned by women	270,000	1.2m	2.7m
Consumption & nutrition	50% increase in consumption of nutrient rich small fish and vegetables by women and children in # poor rural households	135,000	600,000	1.35m
Control of assets and decision making	# of women, youth and marginalized people in focal communities pursuing new and beneficial choices	135,000	600,000	1.35m
Capacity to innovate	Community and hub level innovation platforms established in a) # hubs (#platforms) with b) # hubs fully performing (# platforms)	a) 15 hubs (75 p' fms) b) 5 hubs (50 p' fms)	a) 24 hubs (130 p' fms) b) 10 hubs (100 p' fms)	a) 24 hubs (180 p' fms) b) 15 hubs (150 p' fms)

Intermediate Development Outcomes

Common IDO	SLO 1 Reducing Rural Poverty	SLO 2 Improving Food Security	SLO 3 Improving Nutrition and Health	SLO 4 Sustainably Managing Natural Resources
1. Productivity	10 CRPs			
2. Food security	6 CRPs			
3. Nutrition			11 CRPs	
4. Income	11 CRPs		7 CRPs	
5. Gender & Empowerment	7 CRPs		7 CRPs	
6. Capacity to Innovate	2 CRPs		2 CRPs	
7. Adaptive capacity	6 CRPs			
8. Policies	8 CRPs			
9. Environment				4 CRPs
10. Future Options		4 CRPs		4 CRPs
11. Climate				2 CRPs

The AAS Approach: Research in Development



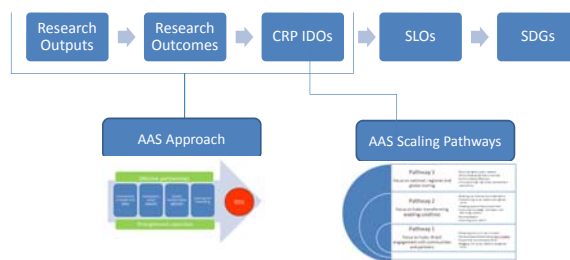


Boutique solutions or impact at scale?

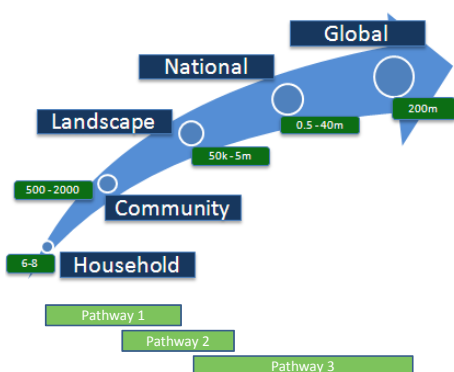


“... the relatively limited geographic scale of much natural resource management research often **limits the overall scale of impacts** of these programmatic thrusts vis-à-vis genetic improvement research.”
Renkow and Bayerlee 2010

AAS Theories of Change and Impact Pathways

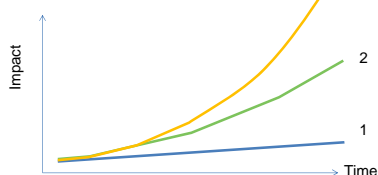


Intermediate Development Outcomes

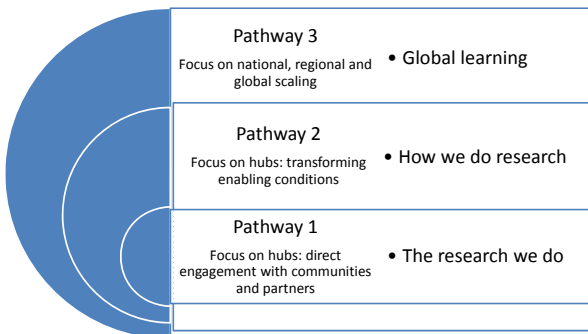


Three scaling pathways

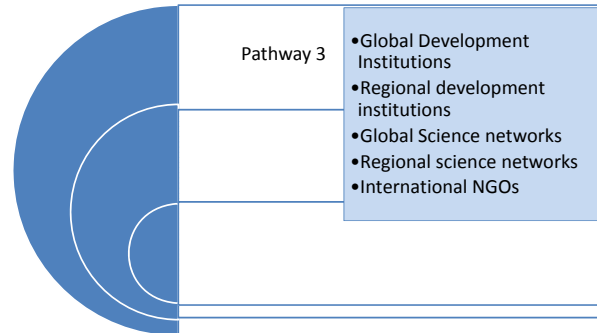
1. Scaling out and up
2. Socio-ecological transformation in our hubs
3. Changing the RD paradigm



AAS – pathways to impact at scale



AAS – Partners and pathways to scale



Systems CRPs and change



Change the way we work in complex farming systems and foster impact at scale on rural poverty

Some questions

Advice IFSA – system CRPs?

- How do we avoid/confront hurdles?
- How do we “attract” the energy of youth?

Synergies IFSA – system CRPs?

- How might we work together?
- How can we help build the capacities and capabilities? (to think, to do, to be)

